

1838

FAMSA. KENWOTH.

COPLES DE
ADMISION



DIAMETRO
2" - 2 1/4"

1838 A

PERKINS

COPLES DE
ADMISION



DIAMETRO
3" - 3"

1838 B

FAMSA. KENWORTH

COPLES DE
ADMISION



DIAMETRO
3 1/2" - 3 1/2"

1838 C

DINA. DODGE.

COPLES DE
ADMISION

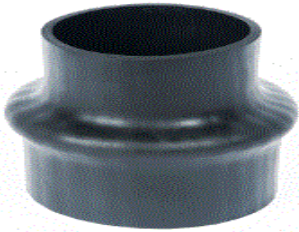


DIAMETRO
4" - 4"

1838 D

FAMSA. KENWORTH.

**COPLES DE
ADMISION**



DIAMETRO
4" - 5"

1838 E

FAMSA. DINA.

**COPLES DE
ADMISION**



DIAMETRO
5" - 5"

1838 F

DODGE. DINA.

**COPLES DE
ADMISION**



DIAMETRO
5" - 5 1/2"

1838 G

**DINA. KENWORTH.
MERCEDES BENZ**

**COPLES DE
ADMISION**



DIAMETRO
5 1/2" - 5 1/2"

1838 H

DINA. KENWORTH.
MERCEDES BENZ

COPLES DE
ADMISION



DIAMETRO

5" - 6"

1838 I

DINA. KENWORTH.

COPLES DE
ADMISION



DIAMETRO

6" - 6"

1838 J

DINA. KENWORTH.

COPLES DE
ADMISION



DIAMETRO

7" - 7"

1838 K

FAMSA.

COPLES DE
ADMISION



DIAMETRO

6" - 5 1/2" (45°)

1838 L



MERCEDES BENZ.

**COPLES DE
ADMISION**

DIAMETRO

5 1/2" - 5 1/2" (LARGO)

1838 M



DINA.

**COPLES DE
ADMISION**

DIAMETRO

2 1/2" - 3 1/2" (corto)

1838 N



DINA. SOMEX.

**COPLES DE
ADMISION**

DIAMETRO

4" - 3"

1838 O



UNIVERSAL.

**COPLES DE
ADMISION**

DIAMETRO

8" - 8"

1838 P

DINA. SOMEX. INTERNATIONAL.
PERKINS. FREIGHTLINER. KENWORTH.
NAVISTAR. MERCEDES BENZ
GMC

COPLES DE ADMISION



DIAMETRO

1 1/2" - 1 3/4"

1838 Q

DINA. SOMEX. INTERNATIONAL.
PERKINS. FREIGHTLINER. KENWORTH.
NAVISTAR. MERCEDES BENZ
GMC. FAMSA

COPLES DE ADMISION



DIAMETRO

2 1/2" - 3 1/2"

1838 S

DINA. SOMEX. INTERNATIONAL.
PERKINS. FREIGHTLINER. KENWORTH.
NAVISTAR. MERCEDES BENZ
GMC. FAMSA

COPLES DE ADMISION



DIAMETRO

4" - 5 1/2"

1838 T

DINA. SOMEX. INTERNATIONAL.
PERKINS. FREIGHTLINER. KENWORTH.
NAVISTAR. MERCEDES BENZ
GMC. FAMSA

COPLES DE ADMISION



DIAMETRO

5 1/2" - 6"

1838 X

DINA. SOMEX. INTERNATIONAL.
PERKINS. FREIGHTLINER. KENWORTH.
NAVISTAR. MERCEDES BENZ
GMC. FAMSA

COPLES DE ADMISION



DIAMETRO

6" x 7"

1838 Z

DINA. FAMSA. KENWORTH.

COPLES DE ADMISION



DIAMETRO

1 1/2" - 2" x 4"